

Senior Parent Night

Pasadena Memorial High School
October 6, 2009





Senior Conferences

- Counselor talking with small groups of seniors
- October 5th through October 10th through English classes
- Dual credit students will be called in individually

Planning for Graduation



- Encourage students to keep track of attendance and make-up time
- Graduation Plans
 - Minimum (22 credits - EXIT form required)
 - Recommended (Required by most 4 year colleges)
 - Distinguished Achievement
 - 3 years of foreign language
 - 4 DAP Measures (AP exam scores; dual credit classes; PSAT score; or individual project)

Options after Graduation

- Military: Active duty/ROTC college programs
- Community College for associate degree or certificate
- Community College to transfer
 - University of Texas – GPA 3.0
 - Texas A&M – GPA 2.5
 - University of Houston – GPA 2.5
- Four year college or university
- Technical school or training program; State or private school; apprenticeship





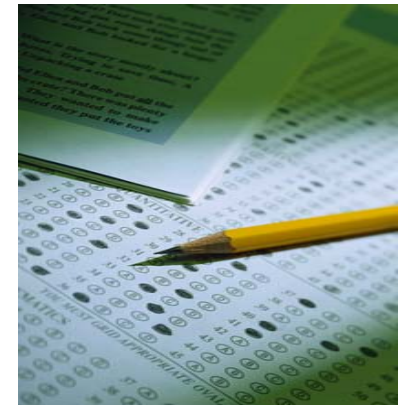
College Admissions

- Admission requirements
 - Not the same for all colleges
 - Most Texas universities require Recommended Plan, but some top tier schools and private schools have extra requirements
 - Check the websites of each college being considered

Admission Tests

○ SAT

- They are currently accepting late registration for November 7th test
- Registration deadline is October 30th for December 5th test
- www.collegeboard.com



Admission Tests

- ACT

- Registration deadline is November 6th for December 12th exam
- www.actstudent.org

- *Free online practice for ACT and SAT: <http://number2.com>*



THEA/Compass

- Part of the Texas Success Initiative
- Placement tests - must be taken prior to enrollment in college-level courses to determine that student has academic skills to be successful

THEA/Compass

- Compass required by San Jacinto College (taken on SJC campus)
- THEA accepted by most Texas state universities and colleges
 - Register online at <http://www.thea.nesinc.com/>

THEA/Compass Exemption

○ Mathematics:

- Exit Level TAKS – Math score of 2200 or higher
or
- SAT – Composite of 1700 or higher and
Math of 500 or higher
or
- ACT – Composite of 23 or higher and
Math of 19 or higher

THEA/Compass Exemption

○ Reading:

- Exit Level TAKS – Language Arts of 2200 or higher and Essay of 3 or higher

or

- SAT – Composite of 1070 or higher and Verbal of 500 or higher

or

- ACT – Composite of 23 or higher and English of 19 or higher

THEA/Compass Exemption

○ Writing:

- Exit Level TAKS – Language Arts of 2200 or higher and Essay of 3 or higher

or

- SAT – Composite of 1070 or higher and Verbal of 500 or higher

or

- ACT – Composite of 23 or higher and English of 19 or higher



Texas Common Application

- Centralized online application for most Texas public universities and participating private colleges.
- www.ApplyTexas.org

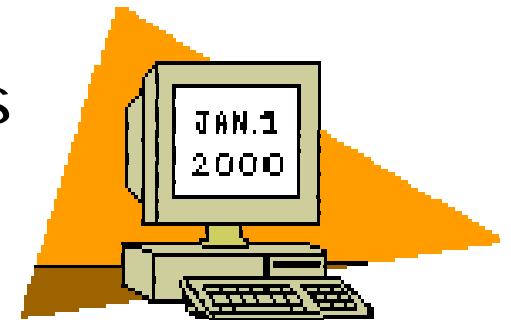


Texas Common Application

- Copy one application and submit it to other institutions.
- Submit your application essays online.
- Apply for scholarships from participating universities.
- Apply for housing with participating universities.
- Search for and view both general and university-specific information.

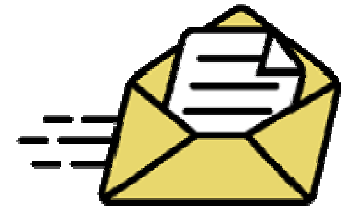
Deadlines

- Be sure to check college website to determine ALL deadlines:
 - Admission
 - Financial Aid/Scholarships
 - Housing



Letters of Recommendation

- Counselors will need two weeks notice to complete a recommendation:
 - Student information sheet
 - Parent Information sheet
 - Request for Teacher information
- Counselor may not always be best choice for recommendation...



Financial Aid



○ FAFSA –

- Federal Application for Student Aid
<http://fafsa.ed.gov/>
- Determines EFC (Expected Family Contribution)
 - May complete FAFSA forecaster now
 - Actual FAFSA cannot be submitted until you have this year's W2 Form
- Generates an electronic Student Aid Report that schools use to prepare a financial aid package based on student's financial need.



Need Based Programs

- Grant Programs
 - Federal Pell Grant
 - TEXAS Grant
 - Supplemental Opportunity Grant (SEOG)
 - Texas Public Education Grant (TPEG)
- Loan and Employment Programs
 - Perkins Loan
 - Stafford Loan (subsidized)
 - College Work Study



Non-Need Based Programs

- Stafford Loan (unsubsidized)
- Parent PLUS Loan
- College Access Loan
- Alternative Private Loans – ask questions, read fine print...

TAFSA

- TAFSA – Texas Application for Student Aid
 - Allows non-citizen students to pay in-state tuition at a Texas public university and to qualify for state financial aid.
 - Fill out TASFA form in January and submit directly to financial aid office at institution you will be attending.
 - The TASFA form is available at www.collegefortexans.com



College Financial Aid Offices

- Counseling for student aid
- Scholarships/Grants/Loans
- Student Employment
- Money Management
- 24/7 access to financial aid information



Scholarships

- Scholarships may be awarded on the basis of:
 - Academic Merit
 - Financial Need
 - Talent
 - Miscellaneous scholarship criteria
 - All or any combination of the above



Scholarships

○ Outside Scholarships

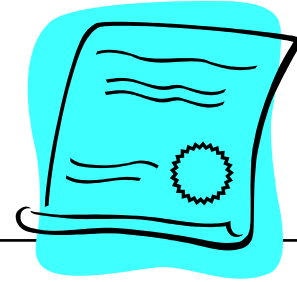
- Internet (check our website for search engines)
- Local library resources
- Local businesses and civic organizations
- Parent's place of employment
- PMHS scholarship bulletin
- Watch out for scholarship scams!



Additional Information

- AP Exams
- Top 10% Rule
- NCAA Clearinghouse
 - <https://web1.ncaa.org/eligibilitycenter/common/>

Senior Award Night



- We want to recognize our students' achievements
- Copy of letters of acceptance from college or university - even if not planning to attend –to Mrs. Terry Hendricks in Counseling office
- Copy of every scholarship offer – whether accepted or not –to Mrs. Terry Hendricks in Counseling office

Useful Websites

- PMHS Counseling Website - <http://www.pasadenaisd.org/pmhs/counseling/Default.html>
- College for Texans – <http://www.collegefortexas.com>

