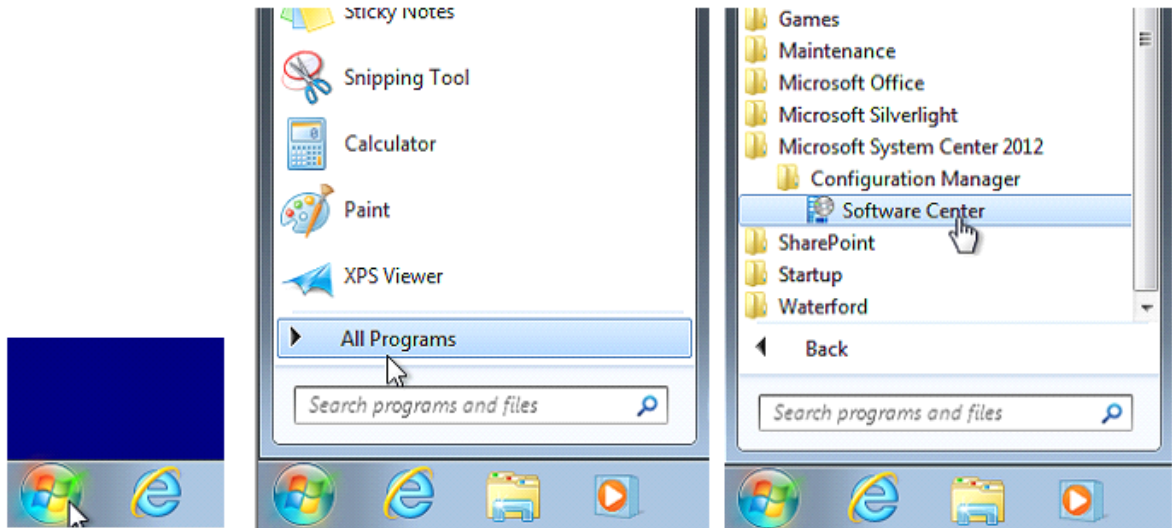


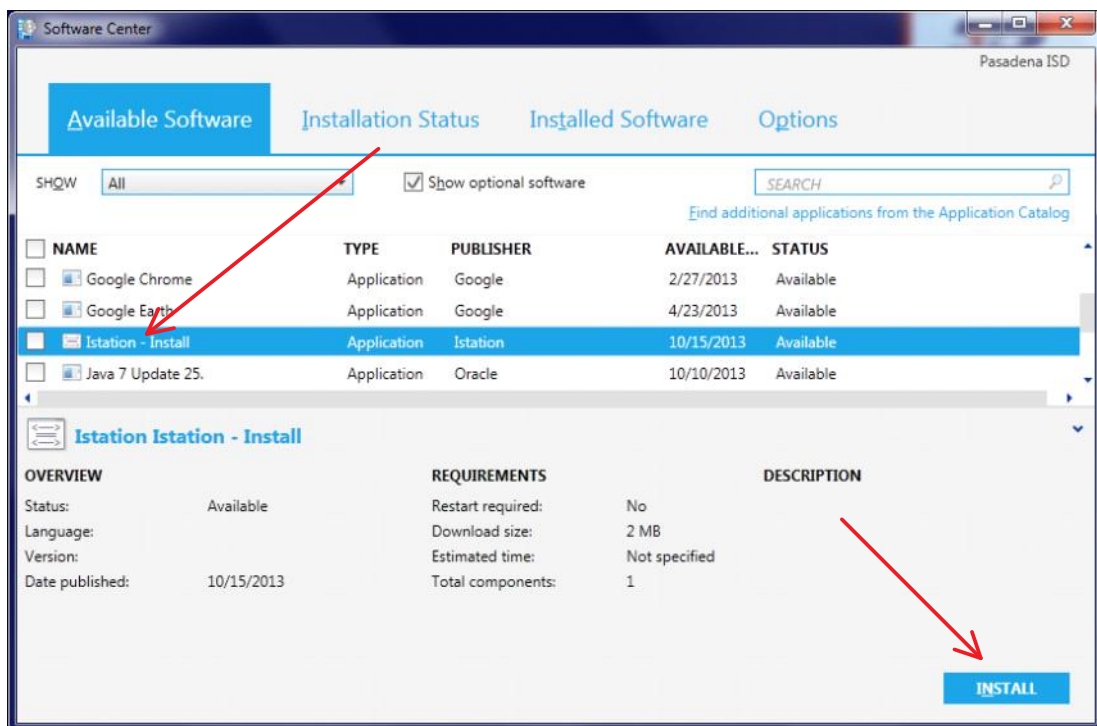
Istation Install

Istation installation is available in software center.

Software Center is accessible from the start menu.

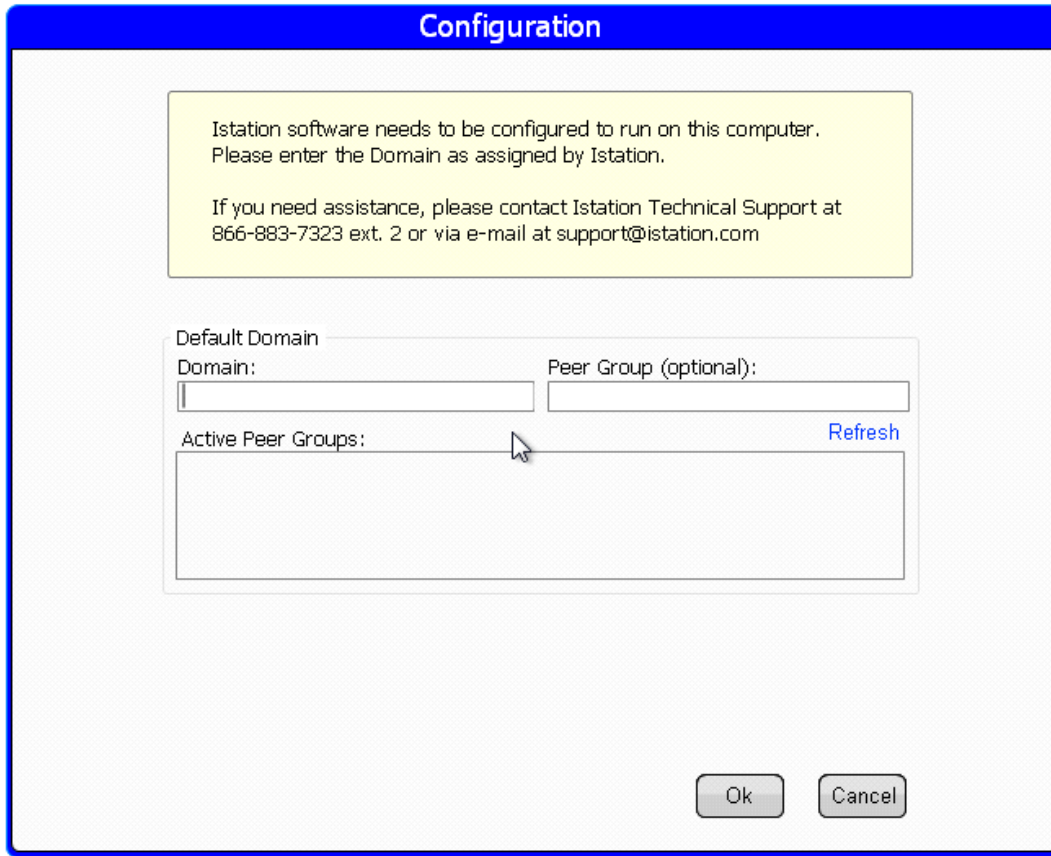


To access Software Center go to Start, then All Programs, and select Software Center from within "Microsoft System Center 2012 \ Configuration Manager".



Istation will be listed under Available Software, to install select it from the list and click the install button.

Installation is automated, once the installation is complete the application will launch, and the user will be presented with a configuration screen.



The user must enter the Domain, this information will depend on the campus. After this is complete, the user will be presented with a logon prompt.

User Name:

Password:



A desktop icon will be created as well.

