

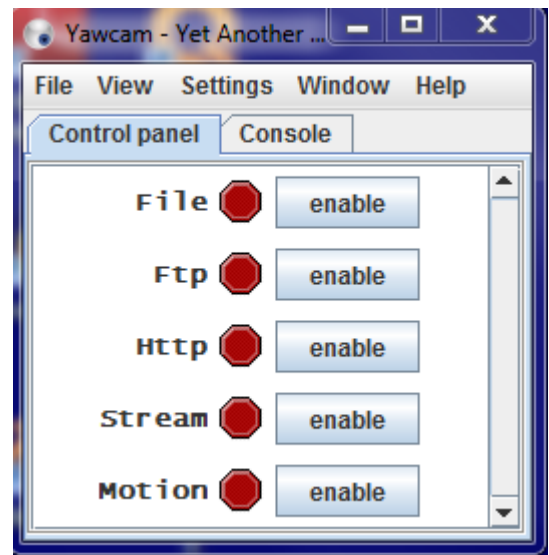
## Using the HP Netbook Web Camera

### Detecting the Camera

1. Go to Start → All Programs
2. Scroll down to Yawcam folder
3. Left click to open it
4. Left click Yawcam

You will see the Yawcam Control Panel →

5. Go to Settings
6. Left click Detect webcam...
7. Click the drop menu and choose HP TrueVisionHD



NOTE: The white light on your webcam (at the top of the monitor) should appear, indicating that the camera is now on.

8. Maximize the window to Full Screen.

## Capturing an Image Using Your WebCam and the Yawcam Software

9. Follow Steps 1-4 above to activate your webcam and to open the Yawcam Control Panel.

NOTE: When the WebCam video window appears, the Yawcam Control Panel displays behind it.

10. Click the Yawcam “Eyeball” Icon on the TaskBar.
11. Click the Yawcam Control Panel to bring it to the front.
12. Left click Window on the menu bar of the Control Panel.
13. Left Click Capture. (Your webcam window will blink off and then on again in 1-2 seconds.)
14. Be sure to maximize the WebCam video window to display the Capture button at the bottom of that window.
15. Click Capture when the WebCam video window displays the image you want to capture.
16. You will hear the sound of a camera click.
17. Maximize the Capture Window that displays to reveal the Save... and Close buttons at the bottom of that window.
18. Click Save if you want to save the image as an image file (.jpg).
19. Navigate to the location where you want to save it.
20. Name the file.
21. Click Save (This will save the image as a .jpg file and will close the Save window.)
22. Click Close to return to the WebCam video window